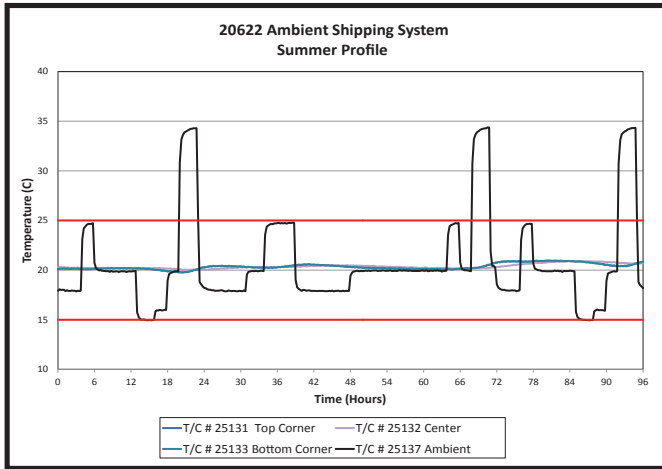
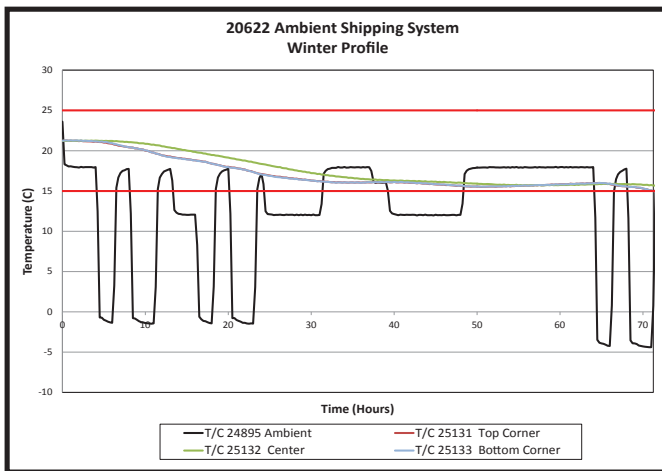


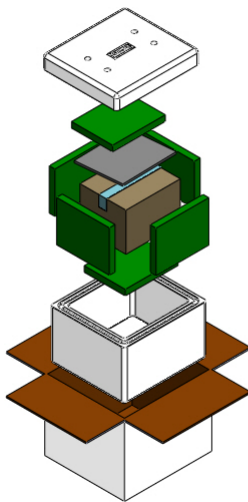
### Controlled Ambient (15-25°C)



**Test Results - Summer (96 hours)**



**Test Results - Winter (71.25 hours)**



## PRODUCT INFORMATION SHEET

### PART NUMBER

**20622**

### BILL OF MATERIALS

QTY	Part Description
1	Corrugated Shipping Carton
1	Corrugated Product Carton
1	EPS Cooler Set (Body and Lid)
6	1350g Gel Cassette
1	Polyurethane Foam Pad

### SYSTEMS SPECIFICATIONS

#### Outside Dimensions - Shipping Carton

(mm) 480 x 447 x 373

(in) 18.9 x 17.6 x 14.7

#### Inside Dimensions – Product Space

(mm) 250 x 214 x 130

(in) 9.9 x 8.4 x 5.1

#### Dead Weight (Includes Refrigerant)

(kg) 11

(lb) 24.5

### CONDITIONING INSTRUCTIONS

Place Gel Cassettes at room temperature (between 18-22°C) for 72 hours prior to assembly.

### PACKING INSTRUCTIONS

1. Remove the Lid and Gel Cassettes from the Cooler.
2. Condition Gel Cassettes, per the Conditioning Instructions.
3. Remove the Product Carton.
4. Fill and seal the product inside the Product Carton.
5. Place 1 ambient 1350g Gel Cassette into the Cooler.
6. Place the filled Product Carton on top of the Gel Cassette.
7. Add 1 ambient 1350g Gel Cassette on the sides and ends of the Product Carton.
8. Place the Polyurethane Foam Pad on top of the Product Carton.
9. Add 1 ambient 1350g Gel Cassette on top of the Polyurethane Foam Pad.
10. Place the Lid back on the Cooler.
11. Close and seal the Outer Carton for shipment.